

HITEMP140

AUTOCLAVE TEMPERATURE

DATA LOGGER



The HiTemp140 is a rugged, high precision, temperature data logger that is built for use in harsh environments. This stainless steel device is submersible and can withstand temperatures up to 140°C (284°F). With the HiTemp140's standard calibration an accuracy of +/-0.1°C (0.18°F) can be achieved over a wide temperature range, from -40°C to +140°C (-40°F to +284°F).

The HiTemp140 can store up to 32,700 readings, and features a rigid external probe capable of measuring extended temperatures, up to 260°C (500°F). Custom probe lengths are available up to 7". The device records date and time stamped readings, and has non-volatile solid state memory that will retain data even if the battery becomes discharged.



Using the MadgeTech Software, starting, stopping and downloading the HiTemp140 is simple and easy. Graphical, tabular and summary data is provided for analysis and data can be viewed in °C, °F, K or °R. The data can also be automatically exported to Excel® for further calculations.

Features

- ±0.1°C (0.18°F) Accuracy
- Operates Up To 140°C (284°F)
- Submersible (IP68)
- N.I.S.T. traceable
- User Replaceable Battery
- Rugged
- Programmable start time
- Programmable stop time
- Engraved Label
- Probe Lengths Up To 7"
- Battery Life Indicator

Benefits

- Simple Setup and Installation
- Minimal Long-Term Maintenance
- Long-Term Field Deployment

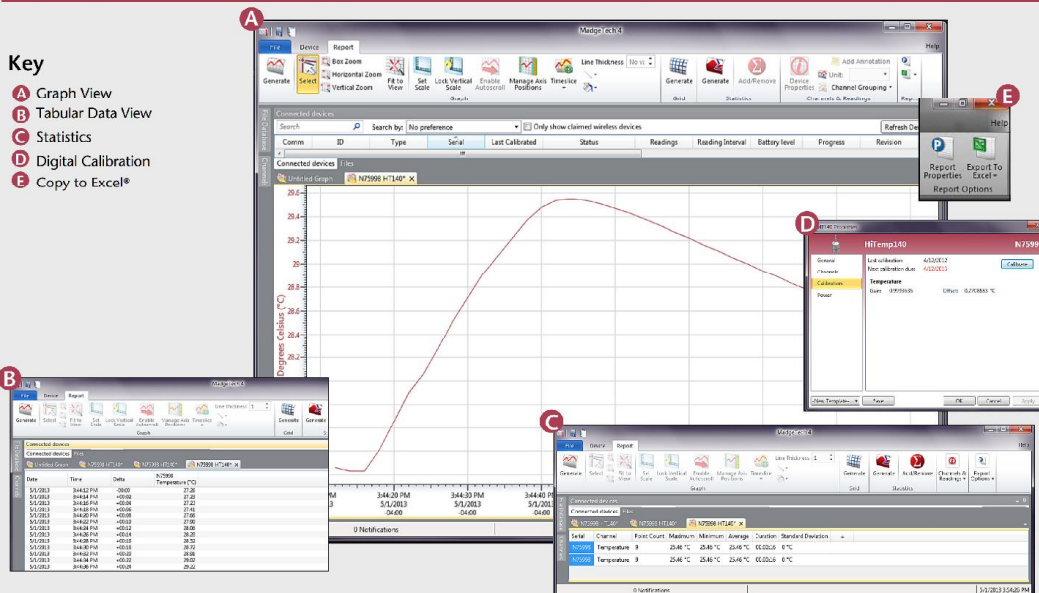
Applications

- Autoclave Verification
- Implement HACCP Programs
- Food Preparation and Processing
- Environmental Studies
- Well Monitoring
- Dishwasher Testing
- Pasteurization

MADGETECH DATA LOGGER SOFTWARE

Key

- A Graph View
- B Tabular Data View
- C Statistics
- D Digital Calibration
- E Copy to Excel®



Software Features:

- Multiple graph overlay
- Statistics
- Digital calibration
- Zoom in/ zoom out
- Lethality equations (F₀, PU)
- Mean Kinetic Temperature
- Full time zone support
- Data annotation
- Min./Max./Average lines
- Data table view
- Automatic report generation
- Summary view
- Multilingual